



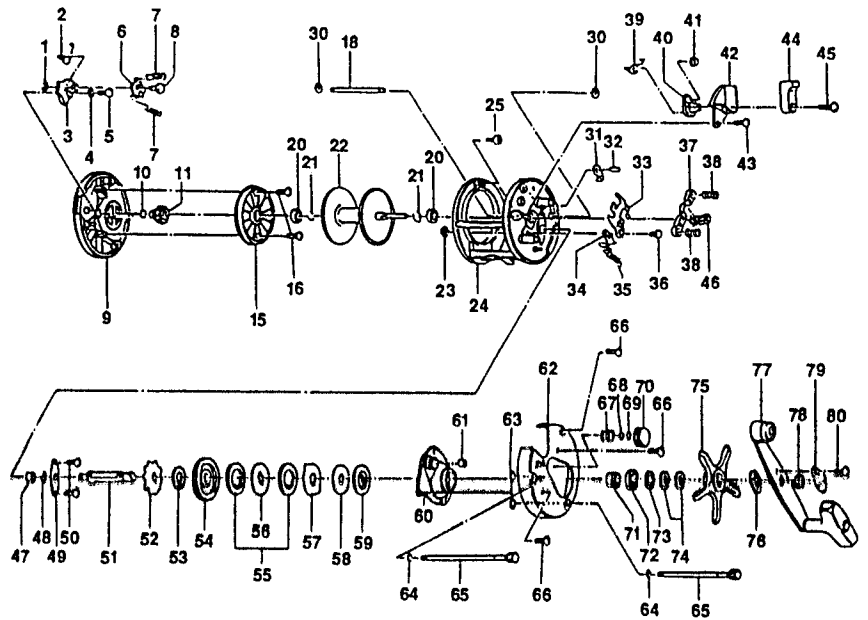
# IR325 / IR335 Iron Bigwater

## SPECIFICATIONS:

IR325: Hvy FW / Med Lt. SW  
 IR335: X Hvy FW / Med. SW  
 Line Cap.: 300 yds / 20 lb (IR325)  
 400 yds / 20 lb (IR335)  
 5.2:1 Gear Ratio  
 17.5 oz. (IR325) / 17.8 oz. (IR335)  
 Lever Clutch Spool Release  
 Posi-Lok Anti-Reverse (15 Point)  
 3 Ball Bearings  
 Inches Per Handle Turn (IPT) = 27.2

## FEATURES:

Machined, 1-Piece Aluminum Frame  
 Oversized, Multi-Disc (6 washer) drag system  
 Audible On/Off Bait Clicker  
 Non-Levelwind Retrieve  
 Anodized-Ceramic coated frame  
 Brass Magnum Gears  
 Stainless Steel Ball Bearings  
 Counterbalanced T-style Handle Knob  
 Aluminum Side Plates  
 Machine Forged Aluminum Spool  
 COLOR: Beige



Key No.	Description	Part No.	IR325	IR335	Price	Key No.	Description	Part No.	IR325	IR335
1	Click Pawl Post E-Clip	NX092-01		⇔	0.30	46	Pinion Gear	KV011-01		LV011-01
2	Bait Click Lever Spring	KV022-01		⇔	0.30	47	Crank Shaft Bushing (L)	JX017-01		⇔
3	Bait Click Lever	KV109-01		⇔	0.75	48	Crank Shaft Retainer E-Clip	QW120-01		⇔
4	Bait Click Lever Washer	KV038-01		⇔	0.30	49	Crank Shaft Retainer	JX002-01		⇔
5	Bait Click Lever Screw	AV125-01		⇔	0.72	50	Crank Shaft Retainer Screw	JX107-01		⇔
6	Bait Click Pawl	KV114-01		⇔	0.80	51	Crank Shaft	KV008-01		⇔
7	Bait Click Spring	KV110-01		⇔	0.21	52	Ratchet	KV083-01		⇔
8	Bait Click Pawl Post	KV098-01		⇔	0.45	53	Ratchet Washer	QW111-01		⇔
9	Left Side Cover Assy	KV323-01		⇔	15.00	54	Drive Gear	KV012-01		⇔
10	Spool Shaft Washer	XX038-02		⇔	0.27	55	Drag Disc ~A~	AV059-01		⇔
11	Oscillate Drive Gear	KV112-01		⇔	0.75	56	Drag ~D~ Washer (L)	KV045-01		⇔
15	Spool Cover	KV051-01		⇔	6.65	57	Drag Key Washer	KV048-01		⇔
16	Spool Cover Screw	AV125-01		⇔	0.72	58	Drag Disc ~B~	KV059-01		⇔
18	Line Guard	NV061-01	PV061-01		1.00	59	Drag ~D~ Washer (U)	AV045-01		⇔
20	Spool Shaft Bearing	CW017-01		⇔	7.75	60	Crank Shaft Guide	KV066-01		⇔
21	Clip Ring	KV080-01		⇔	0.26	61	Tension Knob Bushing	JX117-01		⇔
22	Spool Assy	KV321-01	LV321-01		15.75	62	Right Side Cover	KV024-05		KV024-07
23	Kick Lever Guide Post E-Clip	NX092-01		⇔	0.31	63	Thumb Screw O-Ring	JX073-01		⇔
24	Frame Assy	NV301-01	PV301-01		26.20	64	Thumb Screw Washer	JX121-01		⇔
25	Left Side Cover Screw	NV123-01		⇔	0.15	65	Thumb Screw Assy	KV374-01		KV374-02
30	Line Guard E-Clip	QW120-01		⇔	0.27	66	Right Side Cover Screw	QW123-01		⇔
31	Anti Reverse Pawl Assy	KV363-01		⇔	2.75	67	Tension Knob Spring	JX105-01		⇔
32	Anti Reverse Pawl Post	JX098-01		⇔	0.42	68	Spool Tension Washer	QW032-02		⇔
33	Release Slider	KV039-01		⇔	1.50	69	Cushion Washer	JX082-01		⇔
34	Kick Lever	JX077-01		⇔	0.59	70	Spool Tension Knob	XX033-01		⇔
35	Kick Lever Spring	JX097-01		⇔	0.15	71	Crank Shaft Spacer	LV052-01		⇔
36	Kick Lever Guide Post	JX102-01		⇔	0.91	72	Crank Shaft Bearing	TW058-01		⇔
37	Pinion Yoke	JX025-01		⇔	0.54	73	Crank Shaft Washer	JX038-01		⇔
38	Pinion Yoke Spring	JX040-01		⇔	0.22	74	Spring "D" Washer	JX046-01		⇔
39	Release Slider Cam Spring	KV104-01		⇔	0.25	75	Star Drag	KV055-01		⇔
40	Release Slider Cam	KV141-01		⇔	1.00	76	Handle Washer	NX054-01		⇔
41	Release Slider Guide Bushing	JX068-01		⇔	1.11	77	Handle Assy	KV318-01		⇔
42	Release Lever Cover	KV143-01		⇔	1.00	78	Handle Nut	QW003-01		⇔
43	Release Slider Screw	XX050-01		⇔	0.15	79	Handle Nut Cap	JX034-02		⇔
44	Release Lever	KV142-01		⇔	1.95	80	Handle Nut Cap Screw	QW123-01		⇔
45	Release Lever Screw	KV053-01		⇔	0.90					

MODEL

EFFECTIVE DATE OF